

INDOFINE Chemical Company, Inc.

121 Stryker Lane, Bldg. 30, Suite 1 • Hillsborough, NJ 08844 • U.S.A.

Phone: (908) 359-6778 • FAX: (908) 359-1179

website: www.indofinechemical.com

e-mail: chemical@indofinechemical.com

CERTIFICATE OF ANALYSIS

Catalog Number: 06-1125

Product Name: **ROSARIN**

CAS Number: [84954-93-8]

Lot Number: 2306823

Chemical Formula: C₂₀H₂₈O₁₀

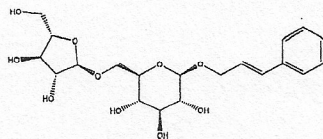
Molecular Weight: 428.43

Appearance: Off-white powder

Water Content: 1.8%

Storage: Store in a cool, dry place. Protect from light.

Purity(HPLC): 99.9%



Prepared by:
Ramesh Mandadi
Ramesh Mandadi
Director of Operations

Reviewed and Approved by:
Sujata Moton
Sujata Moton
VP

ICG **INDOFINE Chemical Company, Inc.**

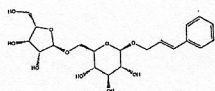
121 Stryker Lane, Bldg. 30, Suite 1 • Hillsborough, NJ 08844 • U.S.A.

Phone: (908) 359-6778 • FAX: (908) 359-1179

website: www.indofinechemical.com

e-mail: chemical@indofinechemical.com

HPLC ANALYSIS



Catalog No.: 06-1125

Product Name: Rosarin

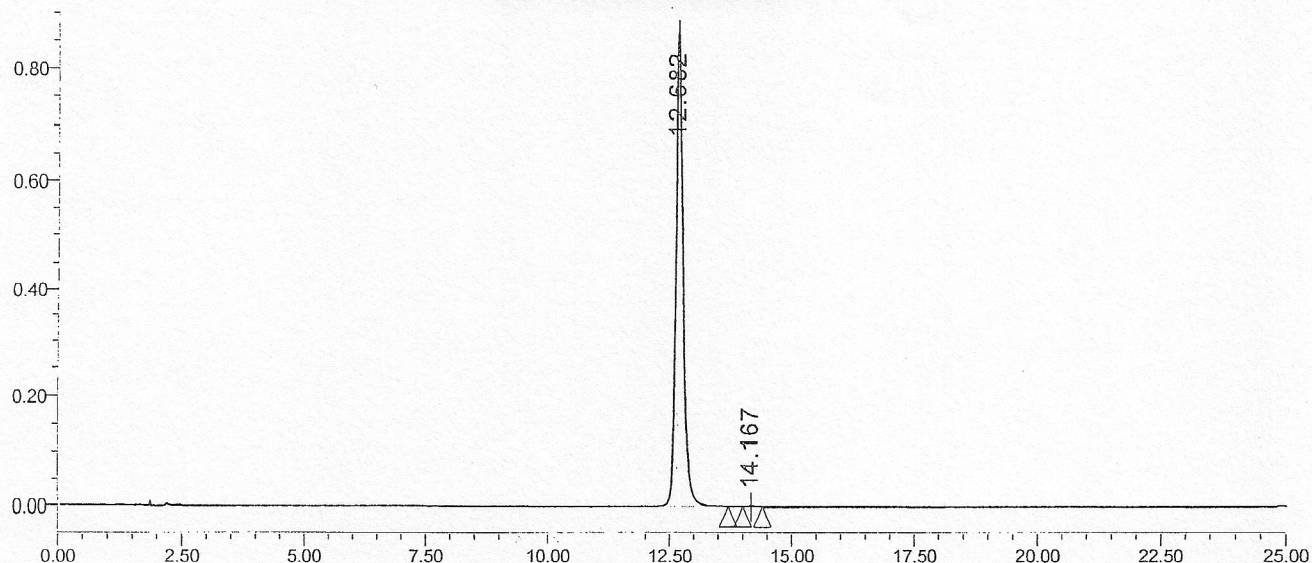
Lot No.: 2306823

SAMPLE INFORMATION

Sample Name: Rosarin
Sample Type:
Vial: 19
Injection #: 1
Injection Volume: 5.00 ul
Run Time: 25.0 Minutes

Acquired By:
Sample Set Name
Acq. Method Set: Rosarin
Processing Method: sample

Auto-Scaled Chromatogram



Peak Results

	RT	Area	% Area	Height	Plate Count	Resolution
1	12.682	8826941	99.90	866906	42124.88	
2	14.167	8917	0.10	1025	65597.62	5.90

Prepared by:
Ramesh Mandadi
Ramesh Mandadi
Director of Operations

Reviewed and Approved by:
Sujata Moton
Sujata Moton
VP